

QUARTERLY 2023 CSC MEETING #2

EAST LOS ANGELES, BOYLE HEIGHTS,
WEST COMMERCE

APRIL 13, 2023

Bernard Tolliver
Senior Public Affairs Specialist



AGENDA



- CSC Member Updates
- CERP Updates:
 - F.I.N.D. Tool
 - California Air Resources Board (CARB) Updates
 - PEAQS & ALPR Project
 - Chrome Plating ATCM
- CAMP Update

ELA, BH, WC, CSC 2023

Member Updates



COMMUNITY LIAISON

EAST LOS ANGELES, BOYLE HEIGHTS, WEST COMMERCE

<http://www.aqmd.gov/ab617/elabhwc>

Bernard Tolliver

Sr. Public Affairs Specialist

btolliver@aqmd.gov

(909) 396-2029

General AB 617 inquiries:

ab617@aqmd.gov



CERP IMPLEMENTATION UPDATE

2ND QUARTER 2023

East Los Angeles, Boyle Heights, West Commerce
April 13, 2023

Nish Krishnamurthy, Ph.D.
Program Supervisor (Working out of Class)

AB 617 COMMUNITY AIR MONITORING PLAN (CAMP)

ASSEMBLY BILL (AB) 617
COMMUNITY AIR INITIATIVES

COMMUNITY EMISSIONS REDUCTION PLAN

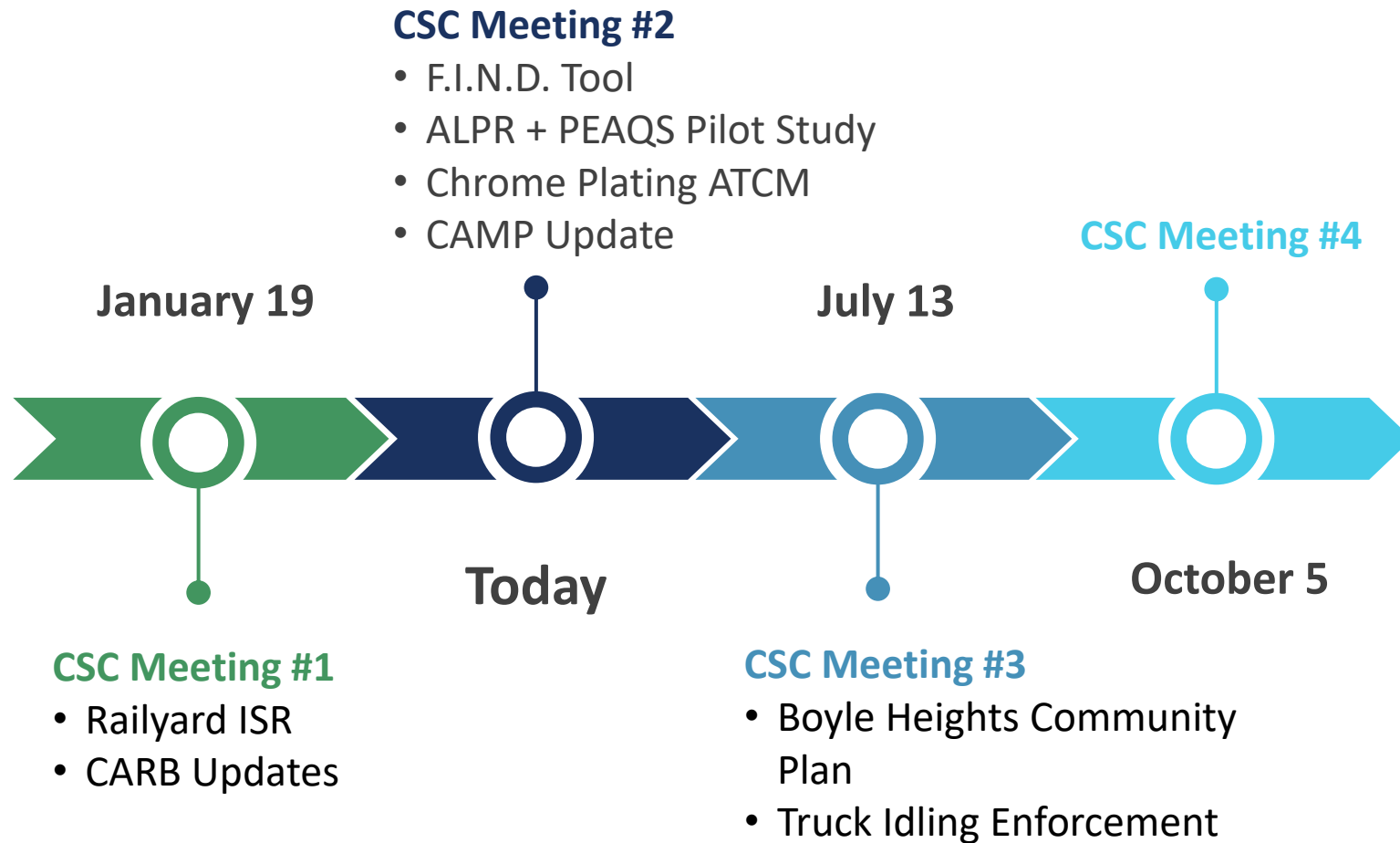
EAST LOS ANGELES,
BOYLE HEIGHTS,
WEST COMMERCE

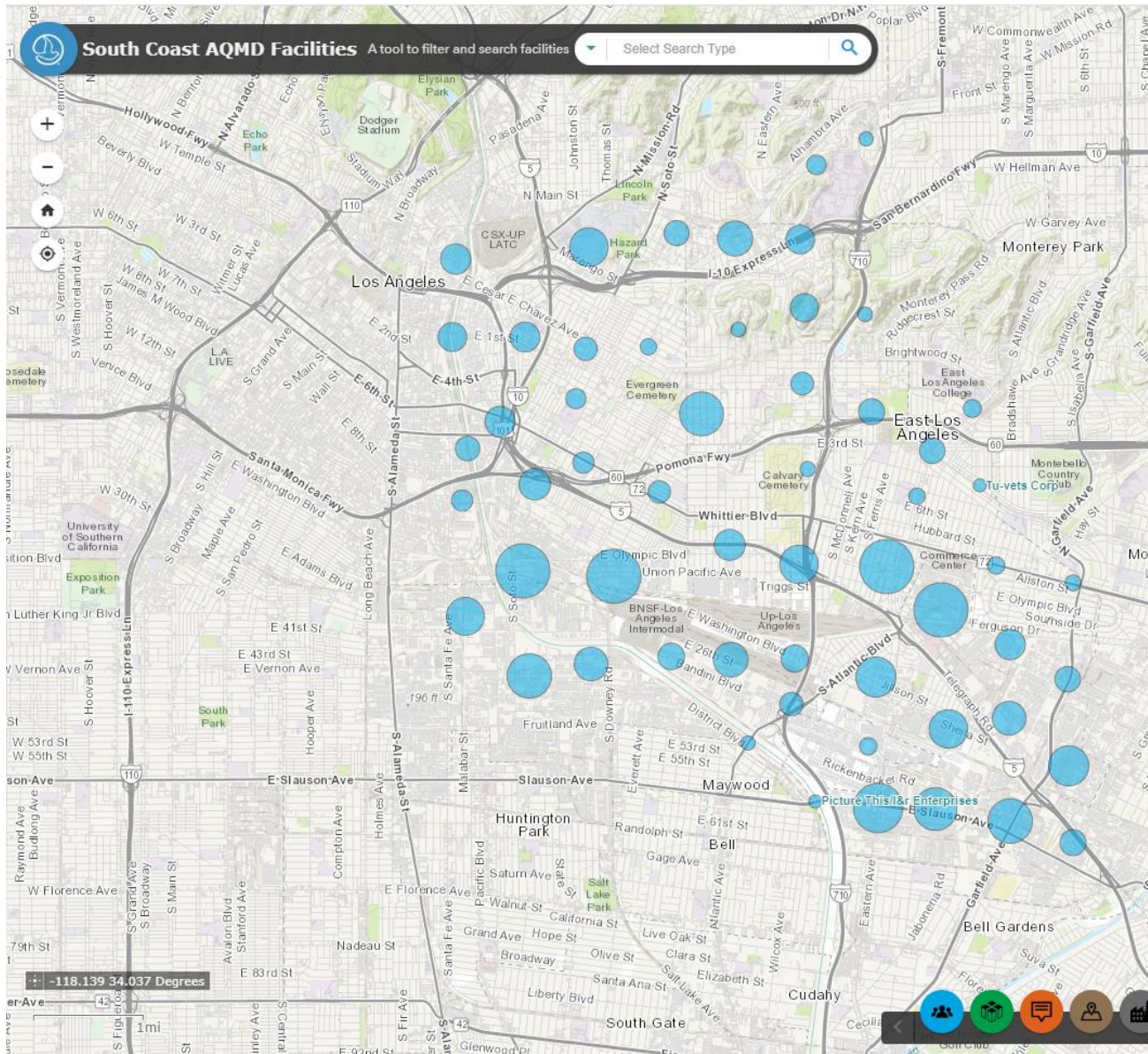
September 2019
Final

SOUTH COAST
AIR QUALITY MANAGEMENT DISTRICT



2023 ELABHWC CSC MEETING TIMELINE

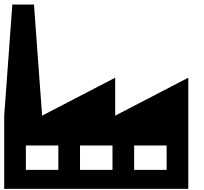




FACILITY INFORMATION DETAIL (F.I.N.D.) TOOL

GENERAL INDUSTRIAL FACILITIES – BACKGROUND

- Chapter 5h – General Industrial, Action 1*
 - **Action:** Improve Accessibility to Facility Information
 - **Goal:** Demonstrate revised F.I.N.D. database to increase awareness as a public information tool
- **Objective:** Provide update on F.I.N.D. tool improvements and how to access facility information



* <http://www.aqmd.gov/docs/default-source/ab-617-ab-134/steering-committees/east-la/cerp/carb-submittal/final-cerp.pdf?sfvrsn=8#page=186>

F.I.N.D.

APRIL 13, 2023

South Coast AQMD
Information Management
Brian Roche



WHAT IS F.I.N.D.?

- Facility Information Detail
- Mobile-friendly web application
- Search for facilities located within the South Coast AQMD, and provide information about permits, compliance, emissions, etc.
- Web Application: <http://www.aqmd.gov/find>
- Facility Map: <http://www.aqmd.gov/findmap>

SEARCH FOR FACILITIES

- Name & Address
- Facility ID
- Application Number
- NOV or NC
- Hearing Board Case
- Map

INFORMATION PROVIDED

- Facility Details
- Equipment List
- Notices of Violation/Notices to Comply
- Annual Emissions Reporting (AER) of Criteria & Toxic Pollutants
- Hearing Board
- Transportation Plans
- Documents (Permits, Violations, Notices to Comply, etc)

SEARCH SCREEN

Facility Information Detail (F.I.N.D.)

Select Search Type: Find a Facility

Name: [Input Field]

Street: [Input Field]

City: [Input Field]

Zip: [Input Field]

RECLAIM TITLE V

SEARCH

SEARCH RESULTS

South Coast AQMD

Facility Information Detail (F.I.N.D.)

Select Search Type: Find a Facility

Name: ARCO

Street:

City: LOS ANGELES

Zip:

RECLAIM TITLE V

SEARCH

SEARCH RESULTS 366 Results

Name: ARCO

City: LOS ANGELES

Remove Search Filters

Clear all filters

Sort: Status

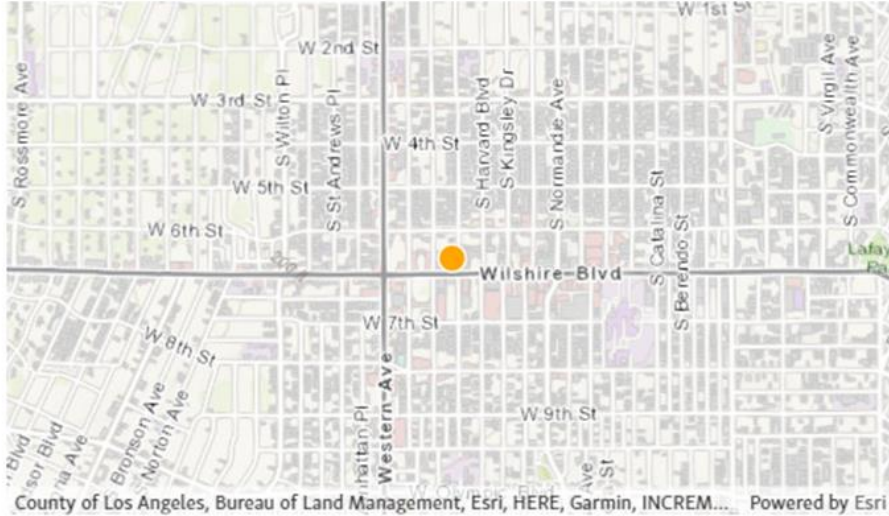
134743 Facility Name ARCO #0069 Facility Address: 9922 S FIGUEROA ST, LOS ANGELES, CA 90003 Status: ACTIVE	26172 Facility Name ARCO DLR, RICARDO MENDOZA Facility Address: 866 W CESAR CHAVEZ BLVD, LOS ANGELES, CA 90012 Status: ACTIVE
174635 Facility Name ARCO #42114 Facility Address: 4406 ADAMS BLVD, LOS ANGELES, CA 90016 Status: ACTIVE	132525 Facility Name ARCO FAC #5355, BP WEST COAST PRODS LLC Facility Address: 3675 WILSHIRE BLVD, LOS ANGELES, CA 90020 Status: ACTIVE
151651 Facility Name ARCO #00191- NADA BOUTROS & GABY BOUTROS Facility Address: 3401 E WHITTIER BLVD, LOS ANGELES, CA 90023 Status: ACTIVE	178558 Facility Name ARCO #83142, MIRAMAR ENTERPRISES, INC. Facility Address: 1605 GLENDALE BLVD, LOS ANGELES, CA 90026 Status: ACTIVE
123618 Facility Name ARCO AM/PM #81294, 21ST CENTURY PROP LLC Facility Address: 3073 LOS FELIZ BLVD, LOS ANGELES, CA 90027 Status: ACTIVE	60849 Facility Name ARCO DLR Facility Address: 5777 HOLLYWOOD BLVD, LOS ANGELES, CA 90028 Status: ACTIVE

Facility location on the map

FACILITY DETAILS SCREEN

ARCO FAC #5355, BP WEST COAST PRODS LLC

Close



Address: 3675 WILSHIRE BLVD, LOS ANGELES, CA 90020

Facility ID: 132525

Status: ACTIVE

Back Fees Due: No.



SIC Code
5541

GASOLINE SERVICE STATIONS

Equipment List



Compliance



Emissions



Hearing Board



Transportation



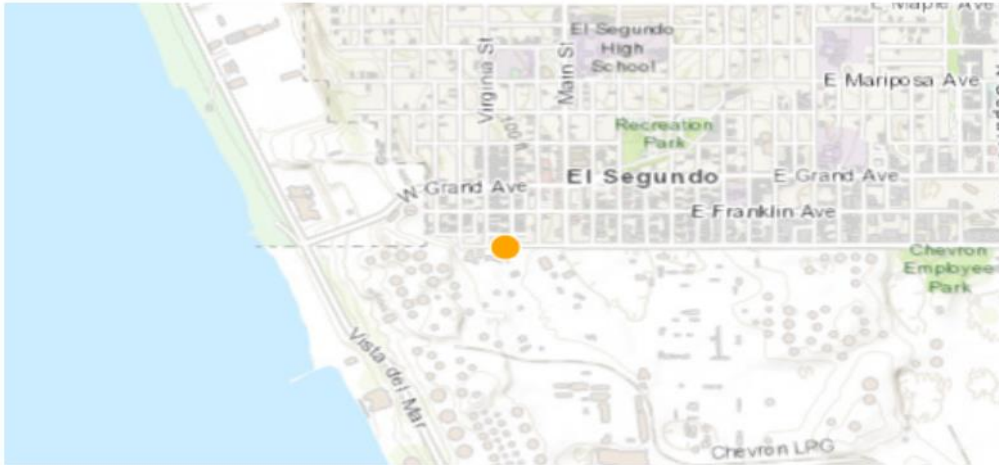
Documents



Expand to see more detailed information

EQUIPMENT LIST SCREEN

CHEVRON PRODUCTS CO. ✕ Close



City of El Segundo, County of Los Angeles, Bureau of Land Management, Esri, HER... Powered by Esri

Address: 324 W EL SEGUNDO BLVD, EL SEGUNDO, CA 90245

Facility ID: 800030

Status: ACTIVE

Back Fees Due: No.



SIC Code

2911

PETROLEUM REFINING

Equipment List ^

1541 Results



Application Date ▾

599793

Cooling Tower, Rule 222

Application Status : PERMIT TO OPERATE GRANTED

Permit Status : ACTIVE

Application Date : 12/26/2017

Type : Basic

599794

Cooling Tower, Rule 222

Application Status : PERMIT TO OPERATE GRANTED

Permit Status : ACTIVE

Application Date : 12/26/2017

Type : Basic

599795

Cooling Tower, Rule 222

Application Status : PERMIT TO OPERATE GRANTED

Permit Status : ACTIVE

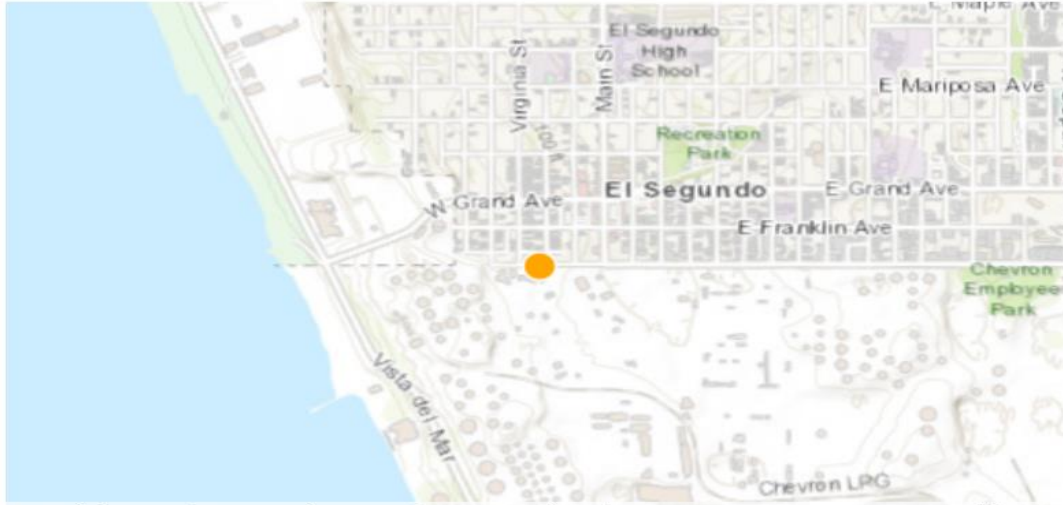
Application Date : 12/26/2017

Type : Basic

COMPLIANCE SCREEN

CHEVRON PRODUCTS CO.

Close



City of El Segundo, County of Los Angeles, Bureau of Land Management, Esri, HER... Powered by Esri

Address: 324 W EL SEGUNDO BLVD, EL SEGUNDO, CA 90245

Facility ID: 800030

Status: ACTIVE

Back Fees Due: No.



SIC Code

2911

PETROLEUM REFINING

Equipment List

Compliance

Notices of Violation

310 Results



Sort: Notice Issue Date

P64615

Notice Issue Date: 06/30/2017

Violation Date: 05/23/2017

Disposition Date: 06/15/2018

Disposition: Closed Case

P64616

Notice Issue Date: 06/30/2017

Violation Date: 05/24/2017

Disposition Date: 06/15/2018

Disposition: Closed Case

P64618

Notice Issue Date: 06/30/2017

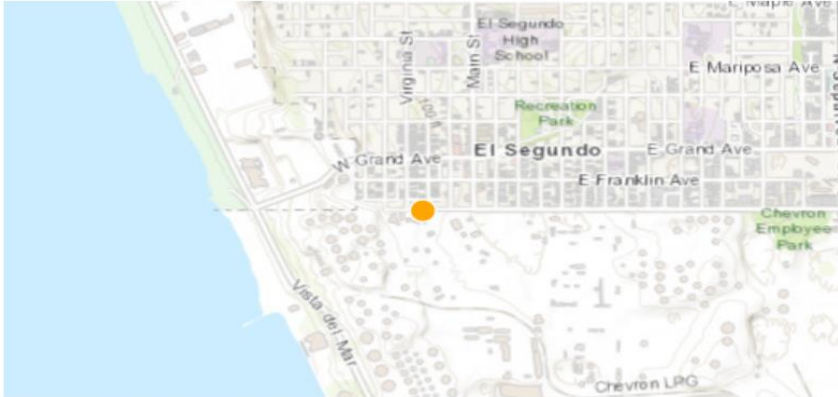
Violation Date: 05/25/2017

Disposition Date: 06/15/2018

Disposition: Closed Case

DOCUMENTS SCREEN

CHEVRON PRODUCTS CO. ✕ Close



City of El Segundo, County of Los Angeles, Bureau of Land Management, Esri, HER... Powered by Esri

Address: 324 W EL SEGUNDO BLVD, EL SEGUNDO, CA 90245

Facility ID: 800030

Status: ACTIVE

Back Fees Due: No.



SIC Code
2911

PETROLEUM REFINING

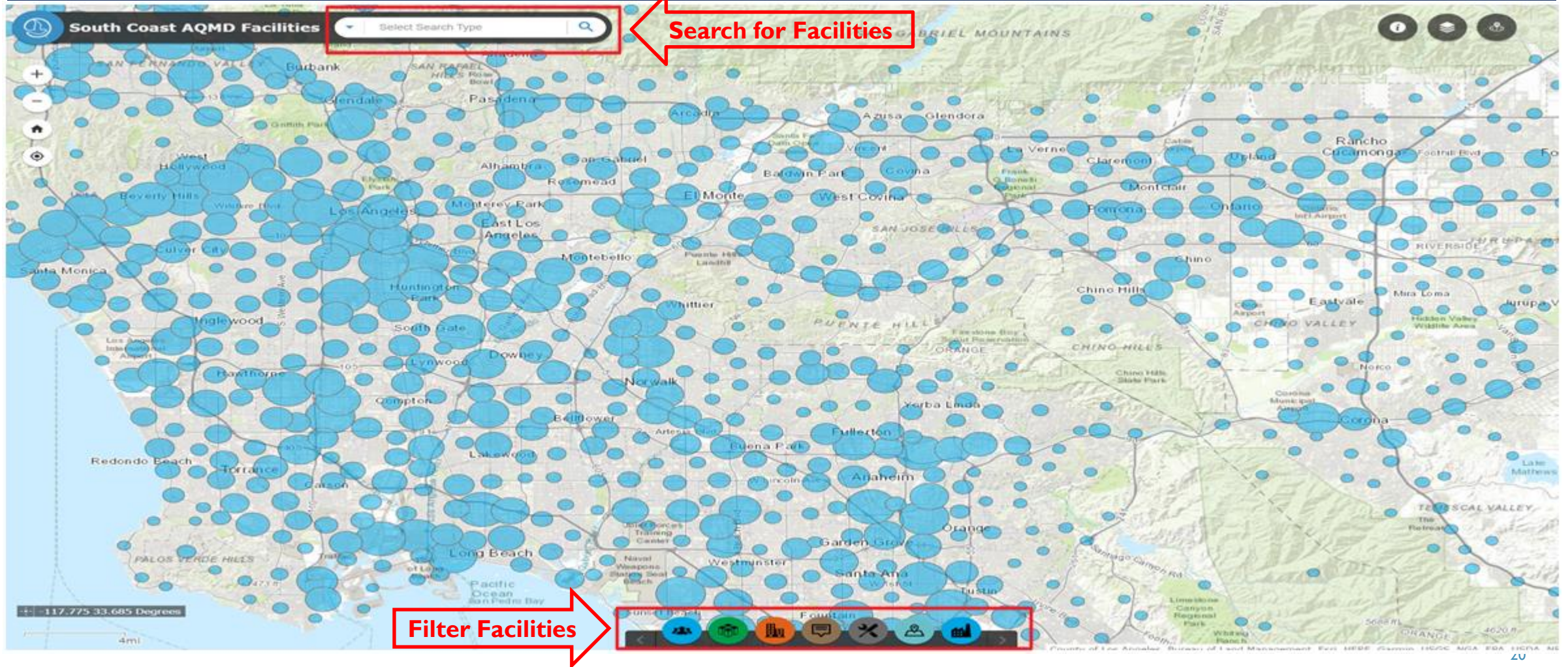
- Equipment List ▼
- Compliance ▼
- Emissions ▼
- Hearing Board ▼
- Transportation ▼
- Documents ▲

Compliance Notices of Violation	Permits to Operate Note: Does not include Permits to Operate for facilities with Facility Permits	Permits to Construct Temporary authorization to Construct and Operate equipment. Note: May be superseded by Permit to Operate with same application number; Does not include Permits to Construct for facilities with Facility Permits
Emissions Rule 1148.2 Chemical Reports, Rule 1148.2 Emission Reports, Rule 1148.2 Notifications	Hearing Board	Facility Permits Includes Permits to Operate and Permits to Construct for Title V and RECLAIM facilities

FACILITY MAP

- Facility Map:
 - Enhanced Searching by Name/Address, Permit, Compliance
 - Filter Facilities by Industry Type, Compliance, Active Permits
- AB617 Community display and filter

MAP FOR FILTERING AND SEARCHING

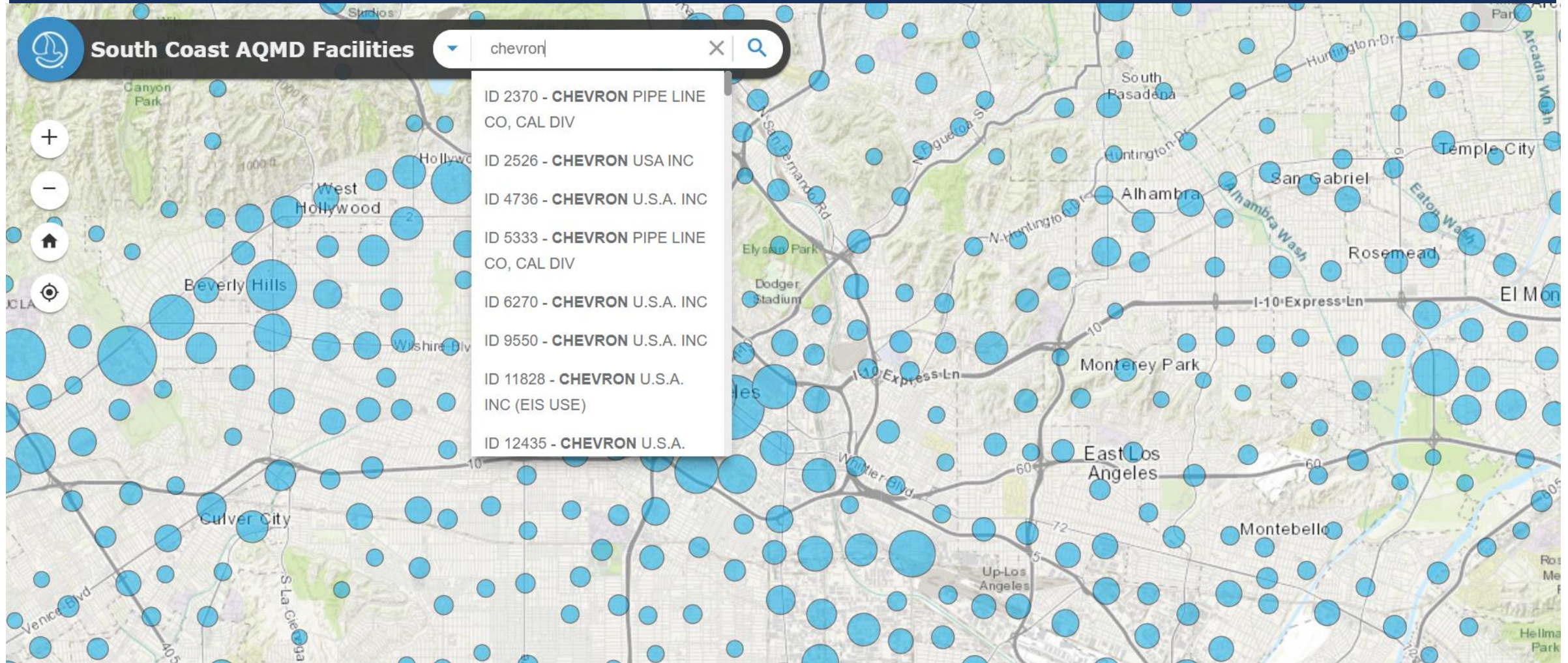


IMPROVED SEARCHING FUNCTIONS

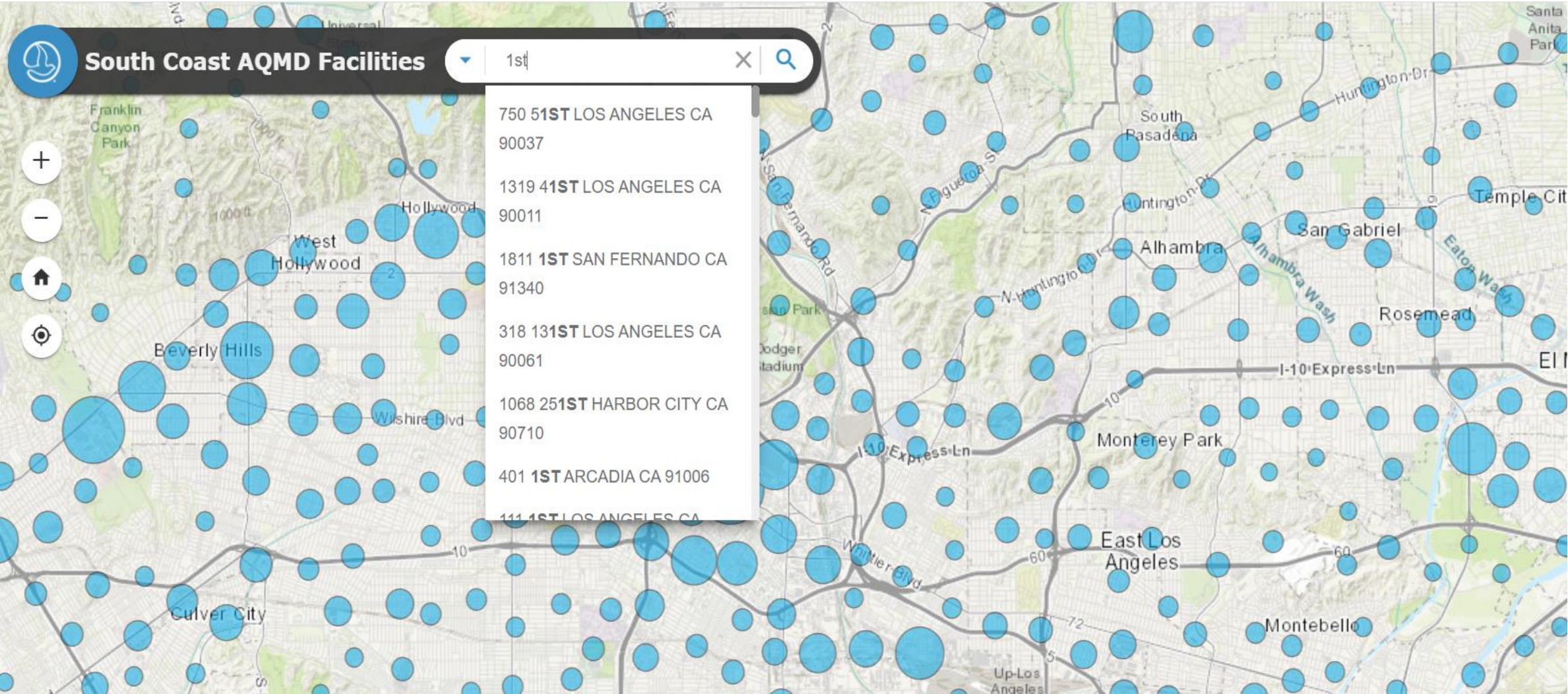
The image displays a web application interface for "South Coast AQMD Facilities". The main area is a map showing various locations marked with blue circles of varying sizes. The map includes labels for cities like Burbank, Pasadena, Alhambra, and Hollywood, as well as landmarks like Griffith Park and Dodger Stadium. Major roads such as I-5, I-10, and I-210 are also visible. On the left side of the map, there are navigation controls: a home button, a location pin, and zoom in/out buttons. At the top right, there is a search bar with a magnifying glass icon and a dropdown menu labeled "Select Search Type". The dropdown menu is open, showing the following options:

- All
- Search Facilities by ID
- Search Facilities by Name
- Search Facilities by Address
- Search Facilities by Permit Number
- Search Facilities by Application Number
- Search Facilities by Notice Number

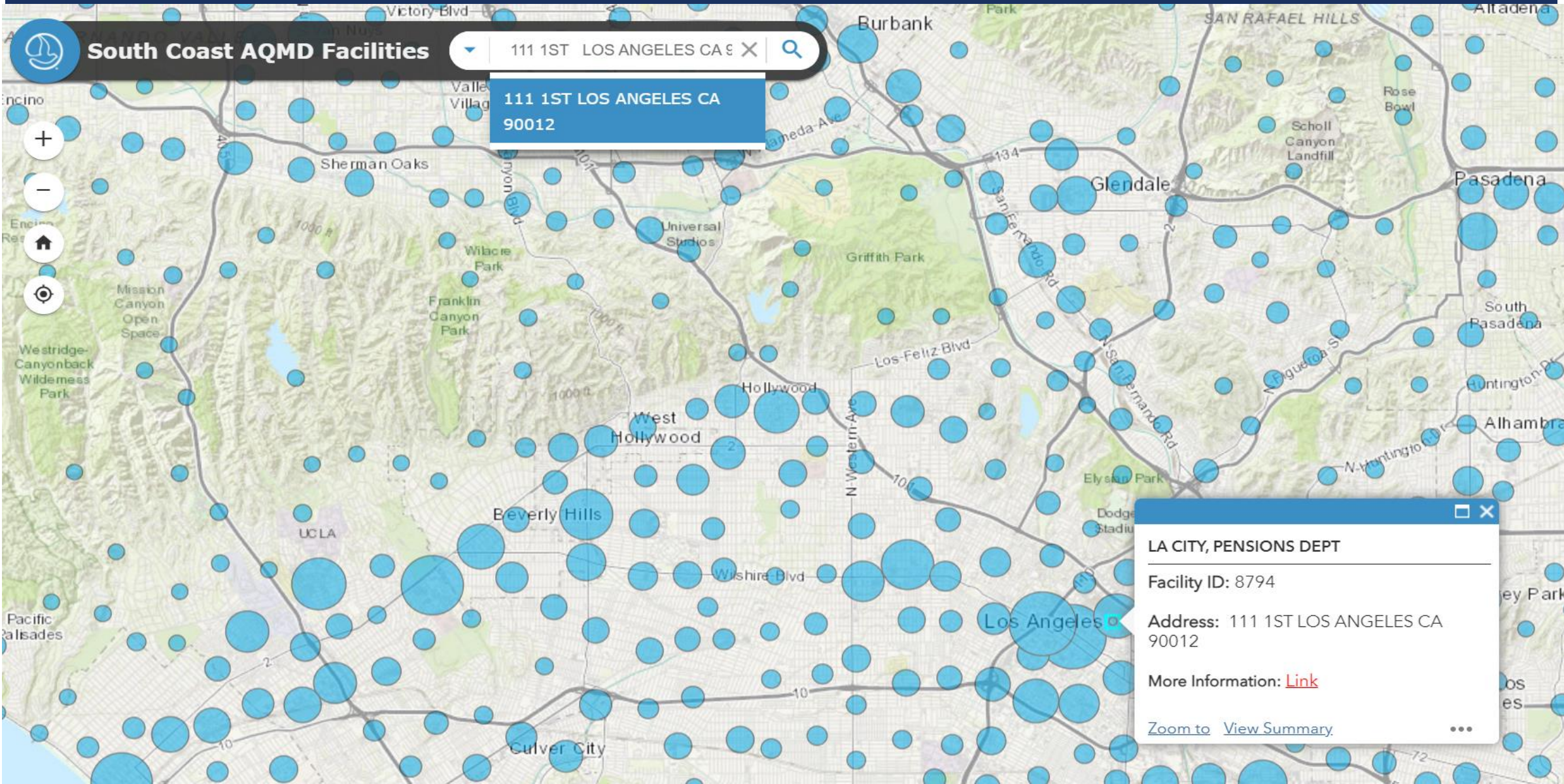
SEARCH EXAMPLE – FACILITY NAME



SEARCH EXAMPLE – FACILITY ADDRESS



SEARCH RESULT



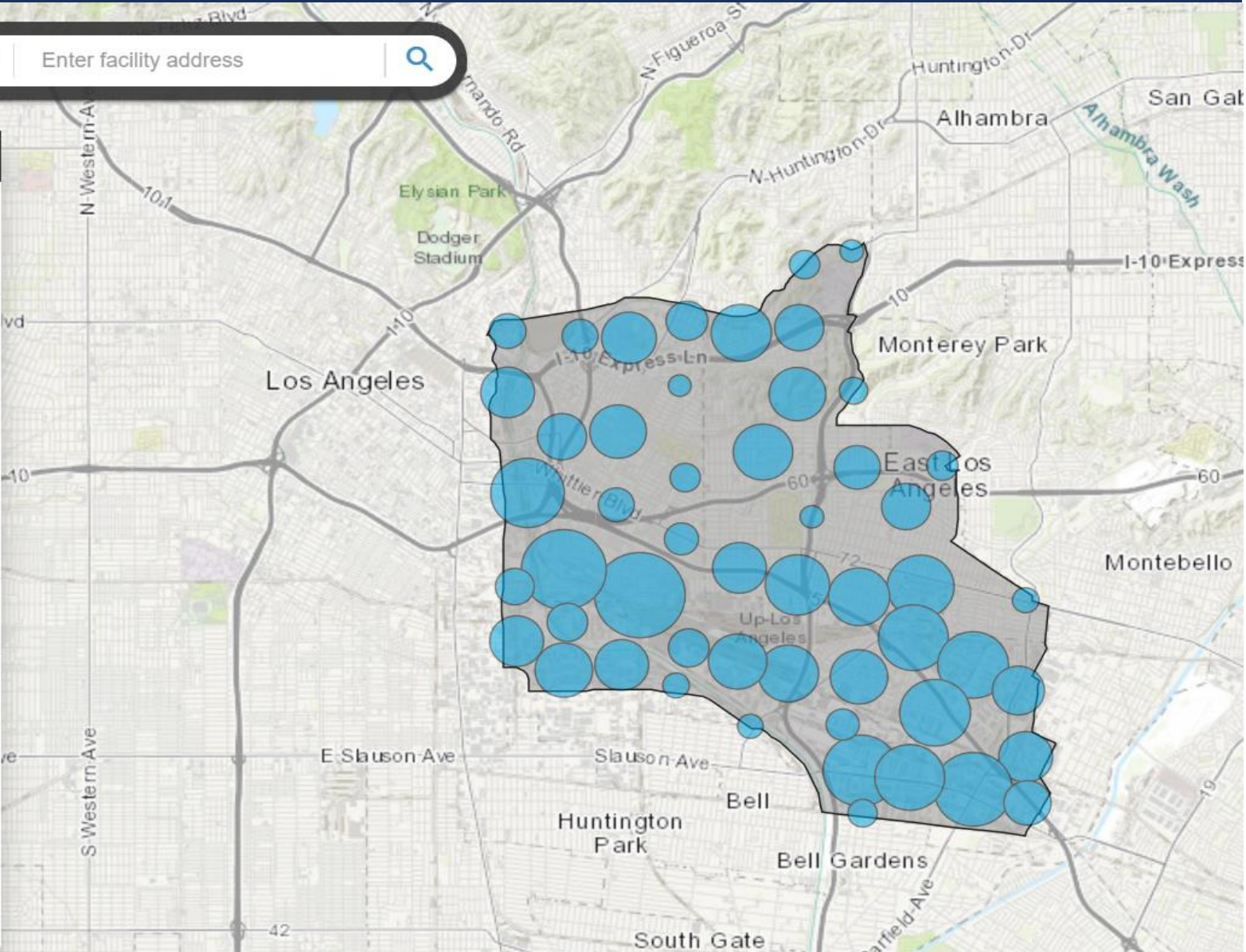
AB 617 COMMUNITY FILTER



South Coast AQMD Facilities

Filter Facilities by AB617 Comm... - X

- Wilmington, Carson, West Long Beach Community
- East Los Angeles, Boyle Heights, West Commerce Community
- AB617 South East Los Angeles Community
- San Bernardino, Muscoy Community
- Eastern Coachella Valley Community



ADDITIONAL FILTERS – FACILITY INFO & INDUSTRY TYPE

South Coast AQMD Facilities Enter facility address

Facility Information

- Facilities with Active Permits
- RECLAIM Facilities
- TITLE V Facilities
- AER Facilities

Display Facilities by Industry Type

- Accommodation and Food Services
- Administrative and Support and Waste Management and Remediation Services
- Agriculture, Forestry, Fishing, Hunting
- Arts, Entertainment, and Recreation
- Construction
- Educational Services
- Finance and Insurance
- Health Care and Social Assistance

FACILITY LOCATION FILTER

The image displays a web application interface for filtering facility locations. At the top, a dark blue header contains the text "FACILITY LOCATION FILTER". Below the header, a map of the South Coast Air Quality Management District (AQMD) is shown, with numerous blue circular markers of varying sizes representing facility locations. The map includes labels for various cities and streets, such as Whittier, Montebello, Maywood, Bell, Bell Gardens, and South Gate. A search bar at the top left of the map area is labeled "South Coast AQMD Facilities" and contains the placeholder text "Enter facility address".

On the left side of the map, a "Filter Facilities by Location" panel is open. This panel has a close button (X) and a search icon. It contains three filter sections:

- Facility Name:** A toggle switch is turned off. Below it is a text input field labeled "Enter facility name".
- Street:** A toggle switch is turned off. Below it is a text input field labeled "Enter street name" with the example text "for example : Main".
- City:** A toggle switch is turned on. Below it is a text input field labeled "Enter city" with the example text "commerce" and "for example : Anaheim".

At the bottom of the filter panel, there is a circular icon with a diagonal line through it, likely representing a "Reset" or "Clear" function.

F.I.N.D.

- www.aqmd.gov/find
- www.aqmd.gov/findmap

Questions/Comments:

Brian Roche

Broche@aqmd.gov



ALPR + PEAQS PILOT STUDY

ALPR + PEAQS – BACKGROUND

- Chapter 5b – Neighborhood and Freeway Traffic, Action 3*
 - **Action:** Utilize New Technology to Identify Older Trucks for Incentive Programs
 - **Goal:** Conduct a pilot study to test suitability of PEAQS to support directing incentives and/or CARB enforcement actions
- **Objective:** Provide update on the results from the ALPR + PEAQS Pilot Study in ELABHWC during the week of March 6, 2023



* <http://www.aqmd.gov/docs/default-source/ab-617-ab-134/steering-committees/east-la/cerp/carb-submittal/final-cerp.pdf?sfvrsn=8#page=131>

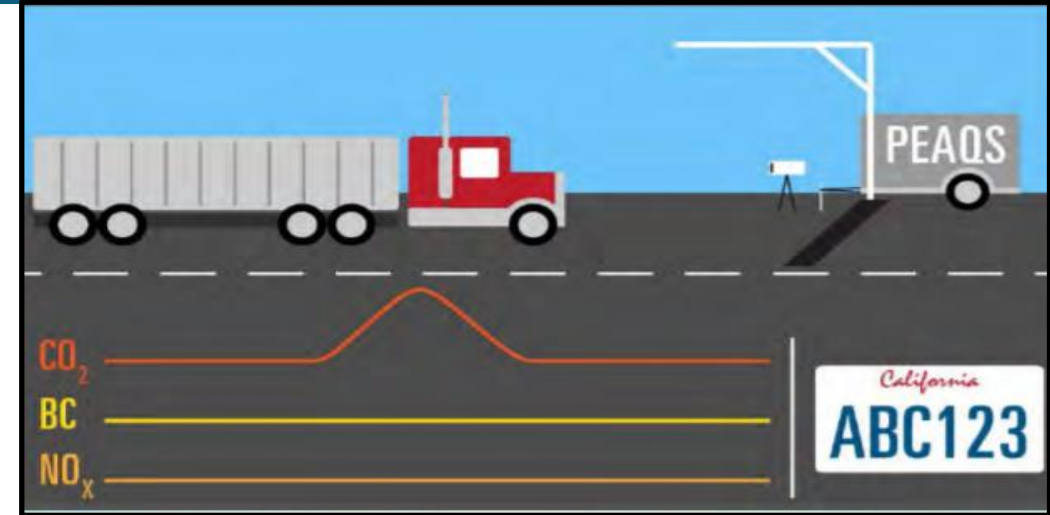
Portable Emission AcQuisition System (PEAQs) and Automated License Plate Recognition (ALPR) Pilot Study Update

April 13, 2023

- **Air quality concern: Heavy-Duty Trucks**
 - Heavy-duty trucks identified as an air quality priority by Community Steering Committee (CSC)
- **Pilot Study Objectives:**
 - Collect heavy-duty vehicle information and assess ability to achieve desired CERP actions
 - Identify older trucks to target incentive funds and truck route planning
 - Determine if PEAQS/ALPR data is a viable path to screen trucks for incentive eligibility

PEAQS

- **P**ortable **E**mission **A**cquisition **S**ystem - **PEAQS**
- Roadside emission snapshot



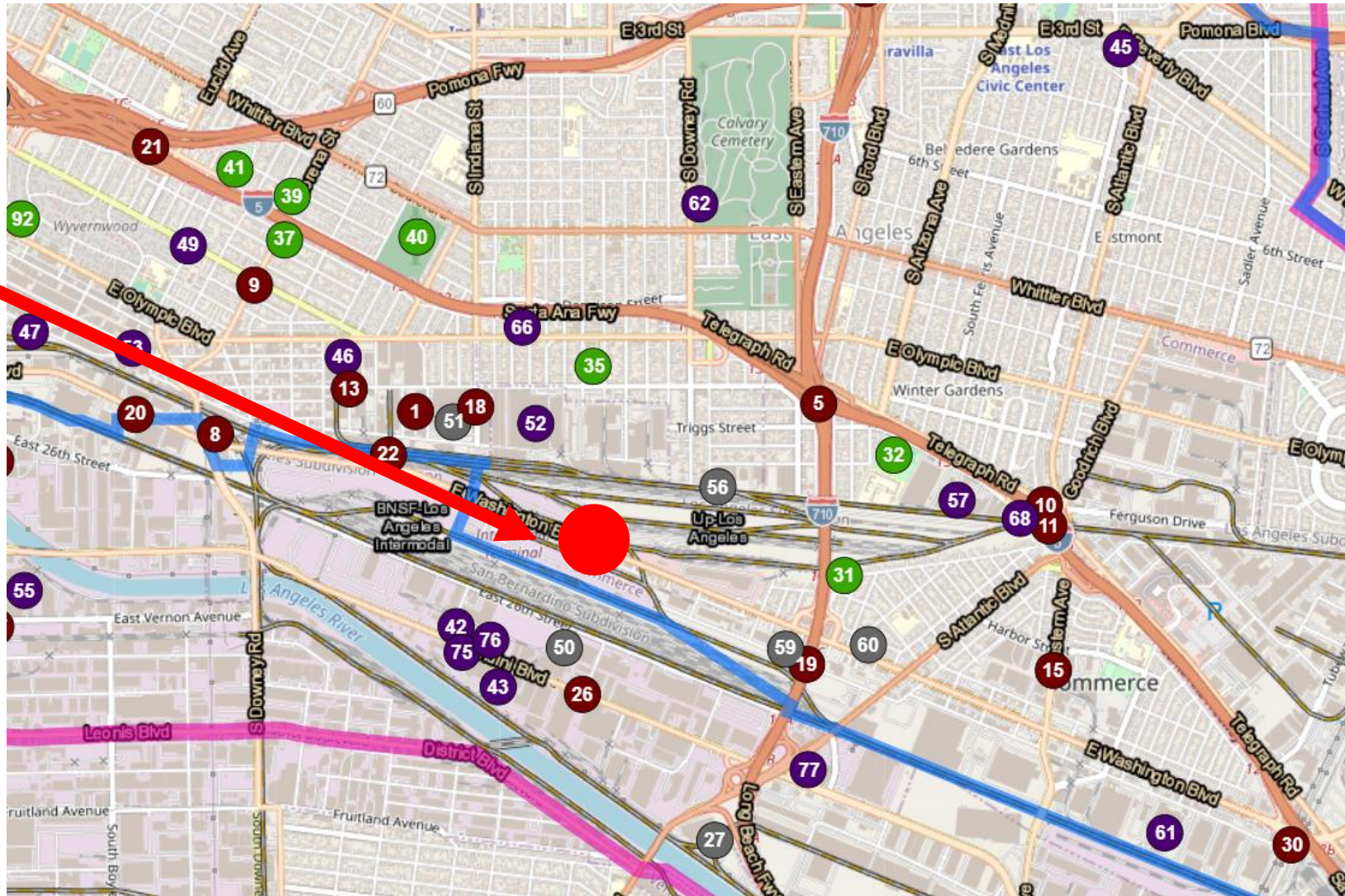
ALPR

- **A**utomated **L**icense **P**late **R**ecognition - **ALPR**
- Collects images of passing vehicles
- Automated algorithm transcribes license plate images to a searchable text file

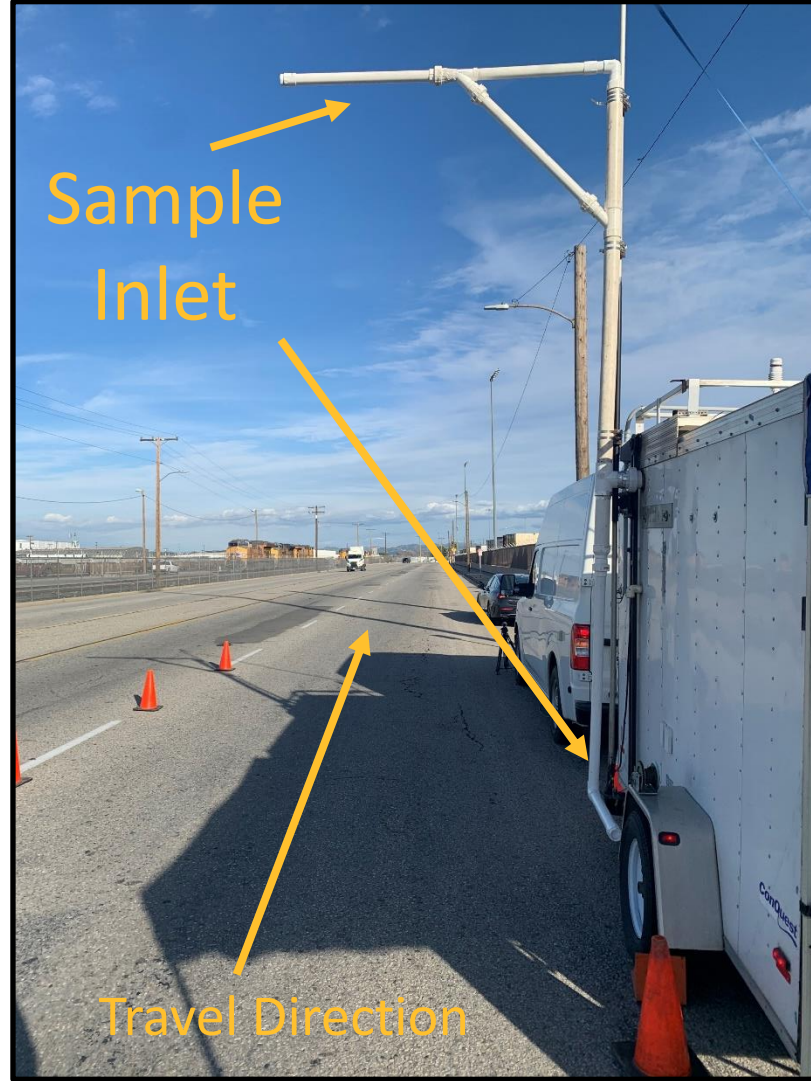
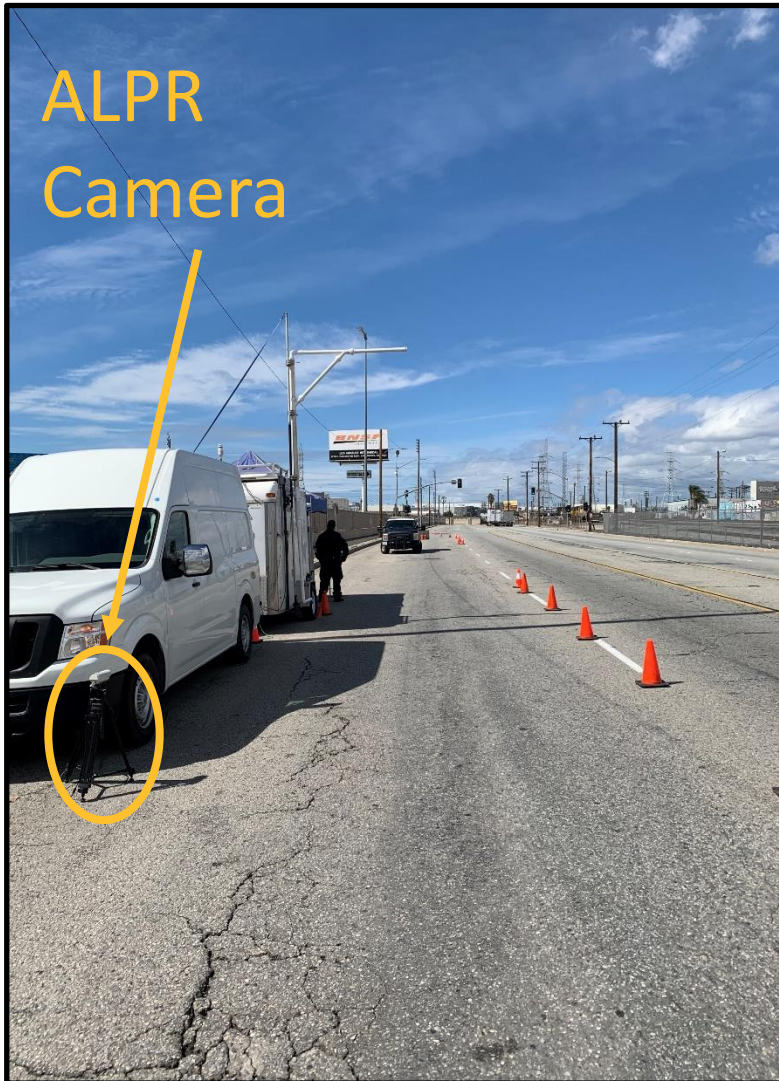


Pilot Project Location

Sampling
Location



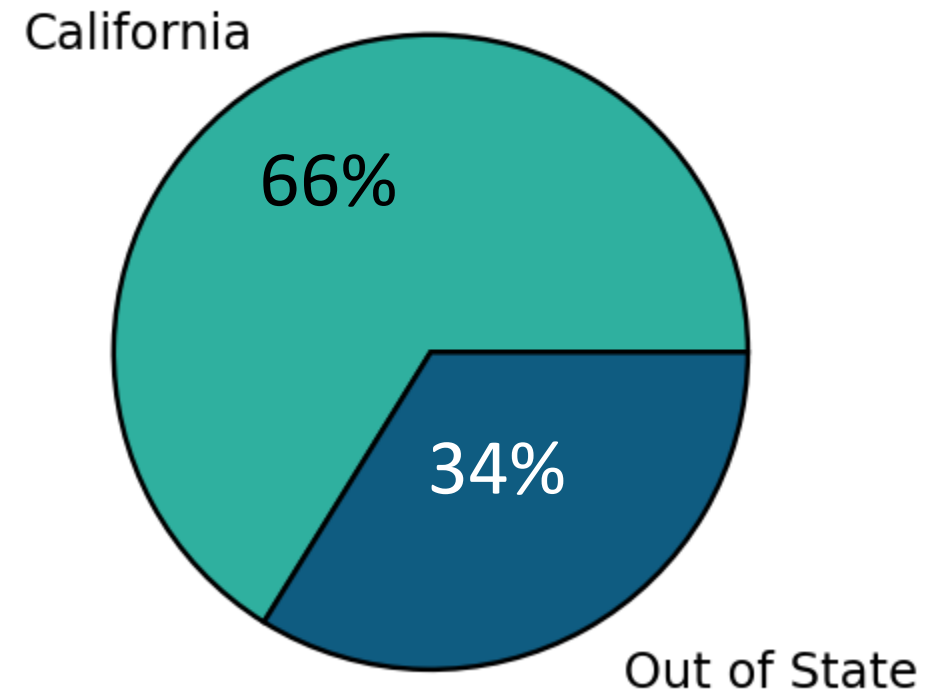
Pilot Study Location



Where are the trucks from?

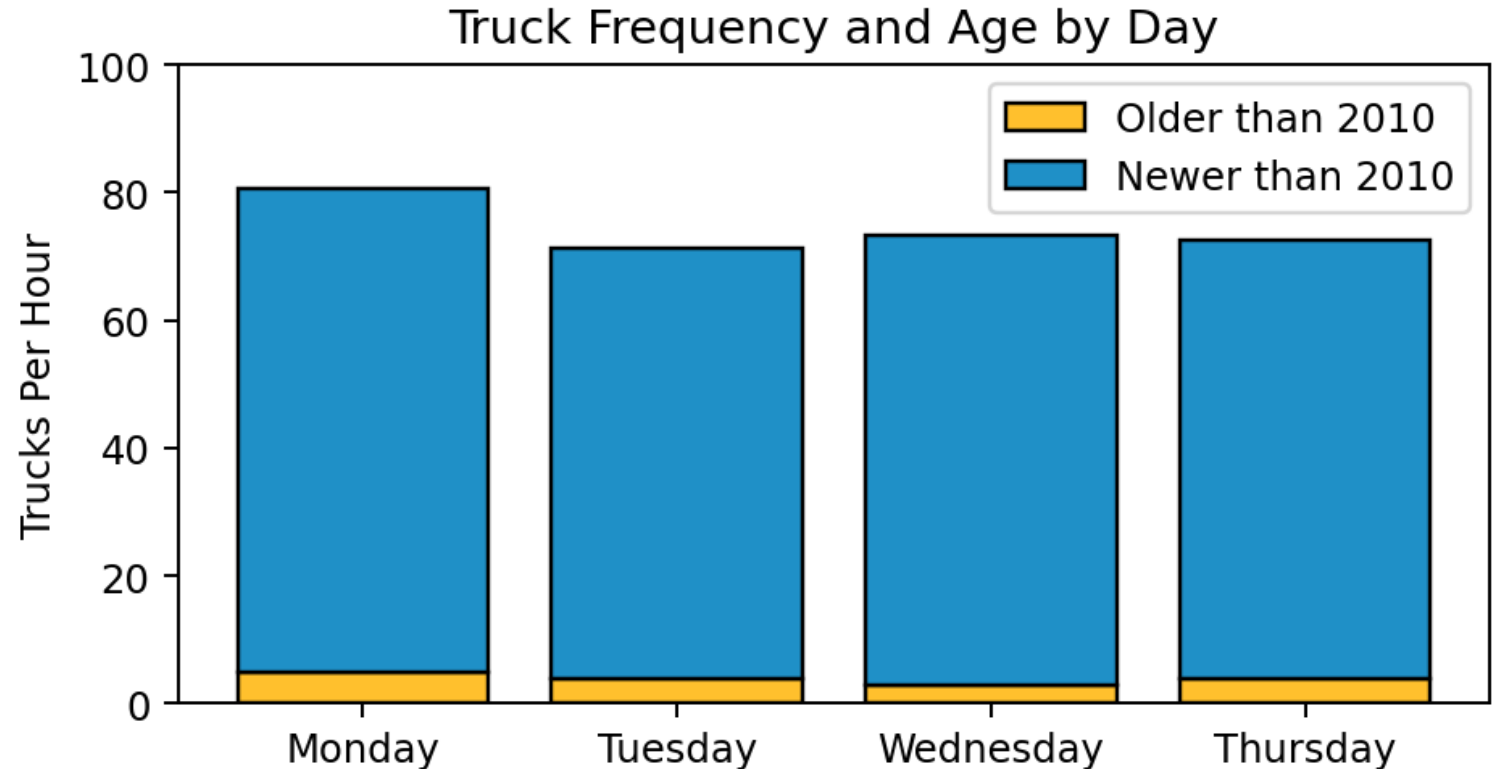
- 1837 trucks screened
- Majority of trucks were from California
- CARB vehicle incentives typically are only applicable to California registered trucks

Truck Registration Location



What was the frequency of trucks?

- Frequency of trucks was similar across all sampling days
- 92% of trucks newer than 2010
 - California: 89%
 - Out of State: 99%



How do we use this data to target incentives?



- Non-compliant vehicles are not eligible for incentives
- Vehicles identified for incentives are both:
 - In compliance
 - Quantified emissions of black carbon or nitrogen oxides

Total Trucks Screened:	1837
Compliant California Trucks	1183
Compliant trucks with Black Carbon Emissions:	31
Compliant trucks with Nitrogen Oxide Emissions:	67
Individual Trucks Identified for Incentives:	68

< 2% of trucks had measurable Black Carbon emissions

What Incentives are available?

- Trucks identified in this study notified of eligibility of incentive funding
- Postcard sent to truck owner in April 2023
- More Information on Incentives:
 - HVIP: <https://californiahvip.org/>
 - ZEV Truckstop: arb.ca.gov/zevtruckstop



HYBRID AND ZERO-EMISSION TRUCK AND BUS VOUCHER INCENTIVE PROJECT

Incentives for Clean Trucks and Buses

Point-of-sale discounts to power California communities and drive commercial technology transformation



Straight Trucks →

\$45K

INCENTIVE RANGE

\$120K

Vehicle Catalog

Pilot Study Conclusion and Next Steps



- CARB is evaluating the use of statewide emission measurements and ALPR for targeting incentives
- CARB is working with South Coast AQMD to discuss implementation

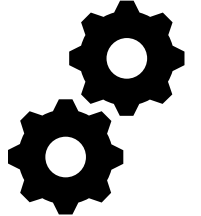
Emission and ALPR	ALPR Only
Highly targeted information	Less targeted information
Resource intensive	Less resource intensive
Incentives and enforcement screening	Incentives and enforcement screening
Requires staff on-site	Can be more easily operated 24 / 7



CHROME PLATING
AIRBORNE TOXIC
CONTROL
MEASURE (ATCM)

CHROME PLATING ATCM – BACKGROUND

- Chapter 5d – Metal Processing Facilities, Action 1*
 - **Action:** Identify Areas to Conduct Air Monitoring for Fugitive Metal Emissions
 - **Goal:** Determine if additional actions such as rule development are needed
- **Objective:** Provide update on CARB’s Chrome Plating ATCM



* <http://www.aqmd.gov/docs/default-source/ab-617-ab-134/steering-committees/east-la/cecp/carb-submittal/final-cecp.pdf?sfvrsn=8#page=152>



Update on the Proposed Amendments to the Airborne Toxics Control Measure (ATCM) for Chrome Plating

East LA, Boyle Heights, West Commerce

2nd Board Hearing Date – May, 25, 2023

Decorative Chrome Plating

- Provides decorative finish as well as basic wear protection
- Used for car parts, motorcycle parts, furniture, faucets, and other



Functional Chrome Plating

- Includes hard chrome plating and chromic acid anodizing
- Done to achieve specific physical properties such as hardness, corrosion resistance
- Aerospace parts, hydraulic equipment, steel rollers, and other high-stress parts



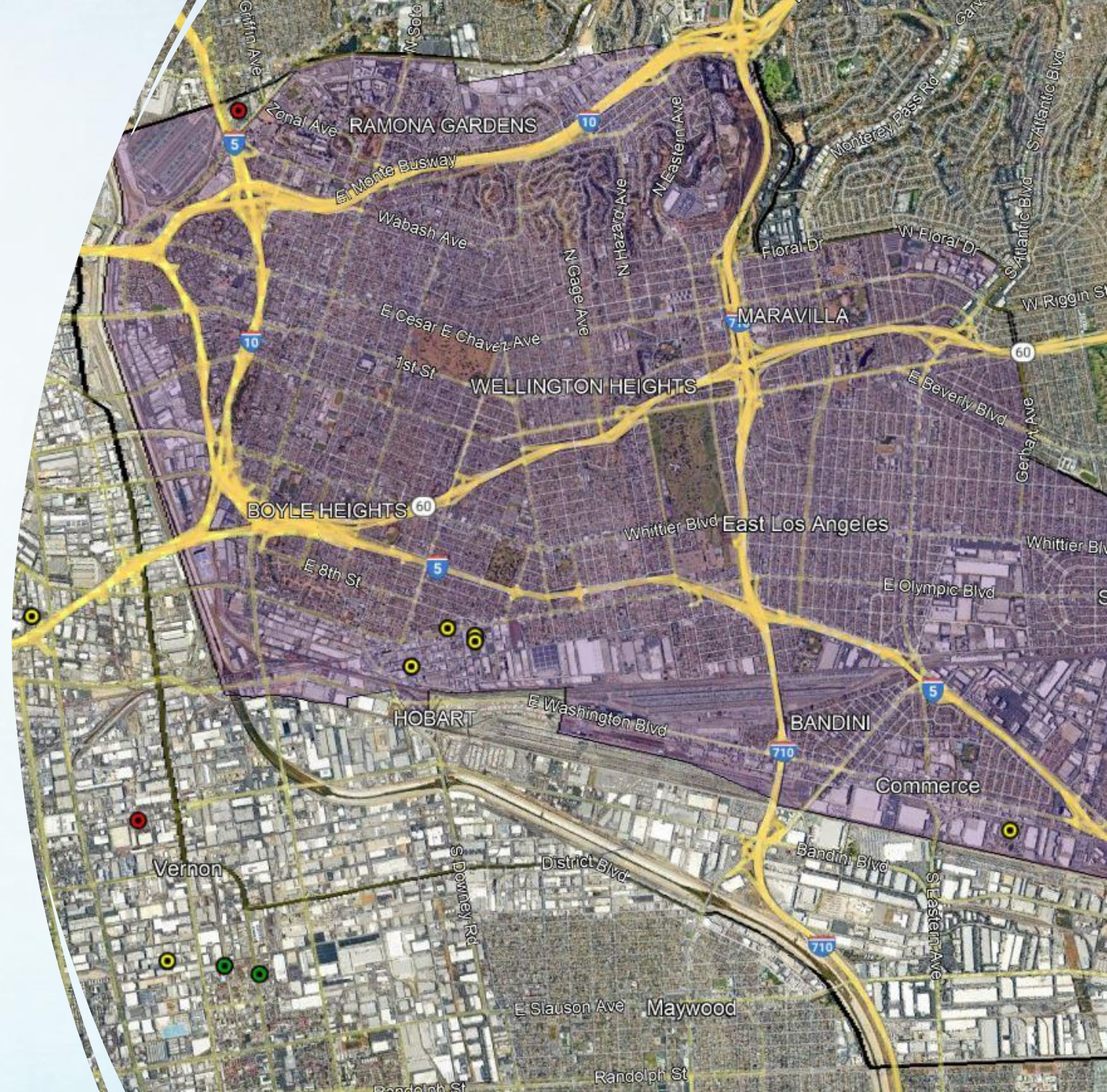
What Happens During Chrome Plating

- Part is dipped into a tank containing hexavalent chromium (sometimes trivalent chromium solution)
- Electrical current is applied
- Electroplating deposits chromium metal on surface
- Anodizing creates an oxide layer on an aluminum part



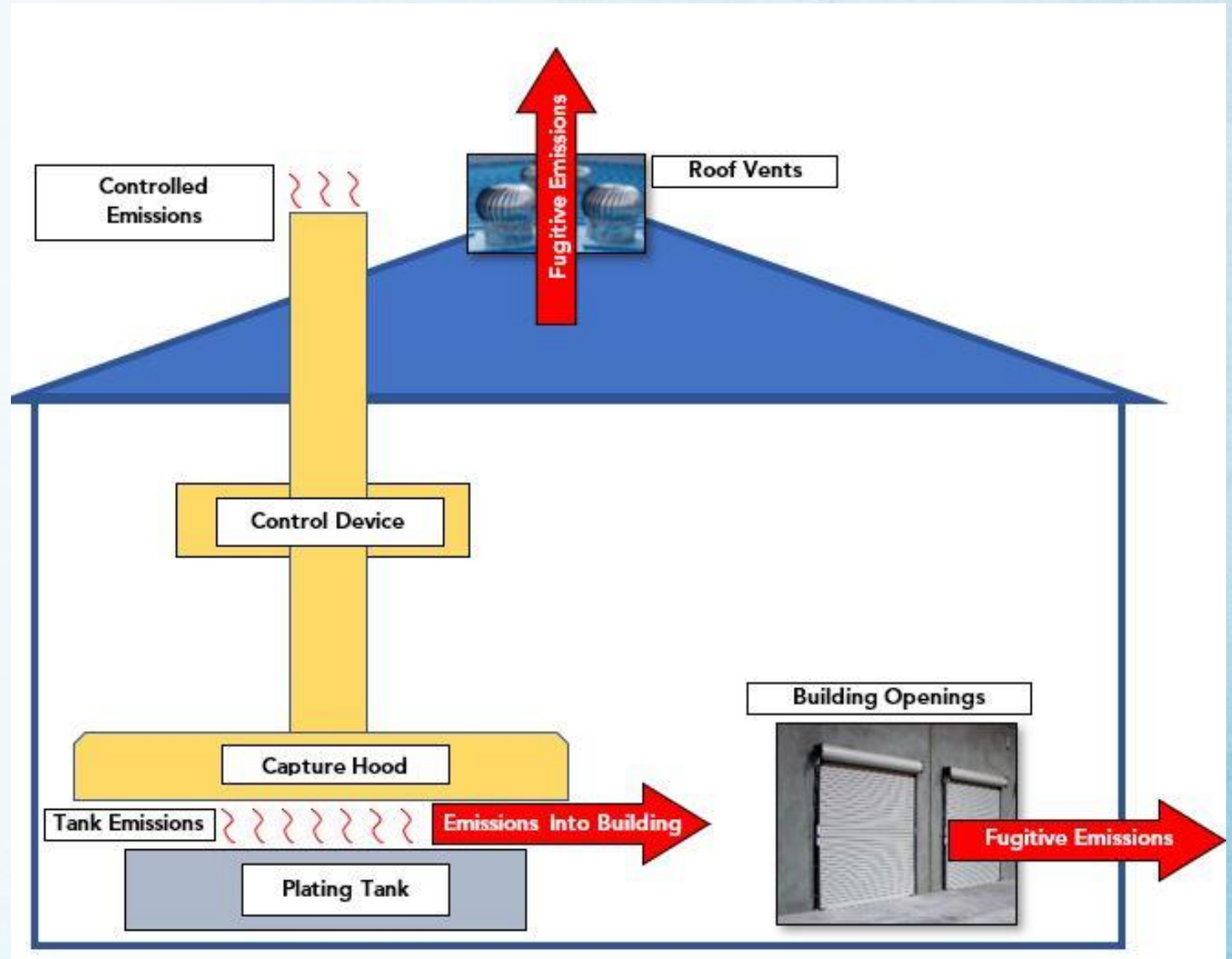
Chrome Plating in your Community

- Within the community
 - 5 decorative chrome plating facilities
 - 1 hard chrome plating facility
- Close to the community
 - 2 decorative chrome plating facility
 - 1 hard chrome plating facility
 - 2 chromic acid anodizing



Emissions from Chrome Plating

- Vapors are formed
- Released vapors contain hexavalent chromium (or trivalent chromium)
- Vapors can be emitted from facility directly or as fugitive emissions
- Vapor release controlled with fume suppressants (contain PFAS) or add-on air pollution control devices



Why Amend This Regulation

- Chrome plating facilities emit highly toxic hexavalent chromium
 - No safe level of exposure
 - 2nd most potent known carcinogen identified by the CARB Board
 - Approximately 500 times more carcinogenic than diesel PM
 - Low concentrations lead to high potential risk

Why Amend This Regulation

- Facilities located close to residences and schools
- Builds upon work to address cumulative impacts in communities
- AB 617 Community Air Protection Blueprint
- Fugitive emissions of hexavalent chromium are a concern
- Less toxic alternatives exists

What The Amendments Do

- No new chrome plating or chromic acid anodizing facilities using hexavalent chromium in 2024
- Decorative Chrome Plating
 - Stop using hexavalent chromium in 2027
 - Stop using hexavalent chromium in 2030 with building enclosures
- Functional Chrome Plating
 - Reduce emissions to below 0.00075 mg/amp-hr by 2026 (1/2 of current standard)
 - Stop using hexavalent chromium in 2039
 - Two technology reviews to assess replacement options (2032 and 2036)

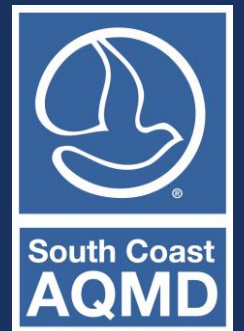
Expected Benefits

- Reductions in hexavalent chromium
 - 6 facilities inside – potential to emit 1.1 lb per year
 - 5 facilities just outside – potential to emit 0.6 lb per year
- Lower exposure for community and employees
- Utilization of alternative technology for decorative plating
 - Trivalent Chromium
- Accelerate technology development for functional applications



CAMP IMPLEMENTATION UPDATE

PAYAM PAKBIN, Ph.D.
ATMOSPHERIC MEASUREMENTS
MANAGER



WHERE TO ACCESS UPDATES AND MONITORING DATA



ELABHWC monitoring webpage provides access to real-time air quality data, CAMP documents, and air monitoring progress reports:

<http://www.aqmd.gov/ab617/monitoring/elabhwc>

A screenshot of the South Coast AQMD website. The page title is "East Los Angeles, Boyle Heights, West Commerce Community". The main content area states: "This page is dedicated to the East Los Angeles, Boyle Heights, West Commerce community data platform for near real-time measurements, the Community Air Monitoring Plan (CAMP) for this community, and data summaries and reports." The page features several sections: "Air Monitoring Data Display" with links for real-time measurements and a video tutorial; "Interactive Data Summaries" with links for time-integrated data, continuous monitoring trends, and mobile dashboards; "Community Air Monitoring Plan (CAMP) Implementation Update" with a link for a progress update; and "Progress Reports" with links for neighborhood/freeway truck traffic and railyards from August 2020. A sidebar on the right titled "YOU MAY ALSO LIKE ..." includes links for "Jurisdiction", "Regional Contacts", "March 2013" CEQA comment letters, and "July 2013" CEQA comment letters. The website header includes navigation menus for "AIR QUALITY", "INCENTIVE PROGRAMS", "RULES & COMPLIANCE", "PERMITS", "NEWS, WEBCASTS, & CALENDAR", "TECHNOLOGY ADVANCEMENT", "RESOURCES", and "MEETING AGENDAS & MINUTES".

REAL-TIME CONTINUOUS MEASUREMENTS

- Provides real time data access
- Tutorial video has been posted on webpage
- Click the link below to access the data display tool and tutorial:

<http://www.aqmd.gov/ab617/monitoring/elahwc>

If you have questions and/or comments, please contact:
Payam Pakbin ppakbin@aqmd.gov

South Coast AQMD - AB 617 Community Air Monitoring

Air Quality Concerns Data Summary & Reports

EAST LOS ANGELES, BOYLE HEIGHTS, WEST COMMERCE COMMUNITY (ELABHWC)

This community, located northeast of downtown Los Angeles, has homes and schools near major freeway interchanges and industrial areas. Additionally, it is located near a goods movement hub, which includes several major rail yards.

MONITORING STATION INFO

Resurrection Church
East Los Angeles

[Historical Search](#)

Black Carbon (BC - PM_{2.5})

1.3 µg/m ³	Average Previous Hour State Standard - N/A Federal Standard - N/A
0.8 µg/m ³	Average Previous 24 Hours State Standard - N/A Federal Standard - N/A

Ultrafine Particles (UFP)

18,230 counts/cm ³	Average Previous Hour State Standard - N/A Federal Standard - N/A
---	---

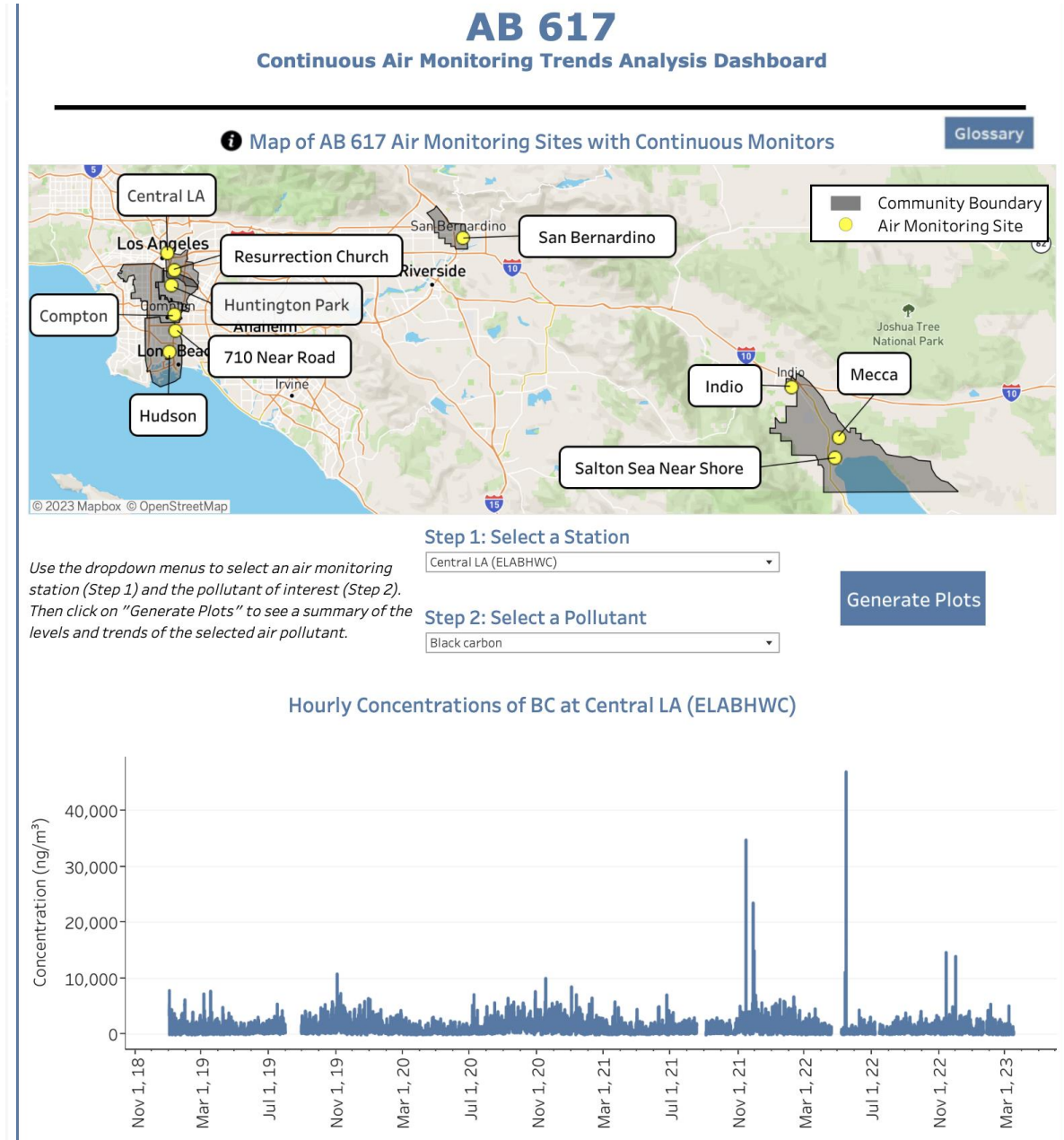


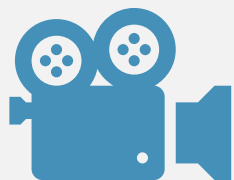
CONTINUOUS TRENDS ANALYSIS DASHBOARD

- Allows user to analyze and summarize trends in the continuous data
- Tutorial video has been posted on webpage
- Click the link below to access the dashboard and tutorial:

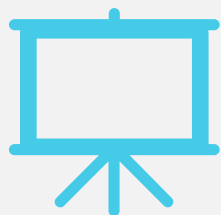
<http://www.aqmd.gov/ab617/monitoring/elabhwc>

If you have questions and/or comments, please contact:
Payam Pakbin ppakbin@aqmd.gov





Did you find today's video demonstrations helpful?



Would you like to see more video demonstrations in the future?

SURVEY

DISCUSSION

- Comments, Questions, Concerns?

Payam Pakbin
ppakbin@aqmd.gov
909-396-2122





JOIN THE CLEAN AIR TEAM!

¡ÚNETE AL EQUIPO DE AIRE LIMPIO!



APPLY ONLINE

APLICA EN LINEA

www.aqmd.gov/careers



4 Day Work Week
Semana de trabajo de 4 días



Retirement Plan
Plan de retiro



Telework up to 3 Days/Week
Teletrabajo hasta 3 días/semana



Life Insurance Benefits
Beneficios del seguro de vida



Medical, Dental and Vision Insurance
Seguro médico, dental y de la vista



Wellness Programs
Programas de bienestar



13 Paid Holidays
13 días festivos pagados



Continued Education Reimbursement
Reembolso de educación continua



Public Comments

